

DRIVER'S OBLIGATIONS



**IMMEDIATELY BRING
THE DOCUMENTS AND KEYS
TO THE OFFICE BEFORE
POSITIONING THE TRAILER
AT THE DOCK**

You may be asked to leave the keys in the office



WEAR A REFLECTIVE VEST

WEAR PROTECTIVE FOOTWEAR

**FOLLOW THE INSTRUCTIONS
OF WAREHOUSE STAFF**

DRIVER'S OBLIGATIONS



***DO NOT DISCONNECT THE TRACTOR
FROM THE TRAILER***

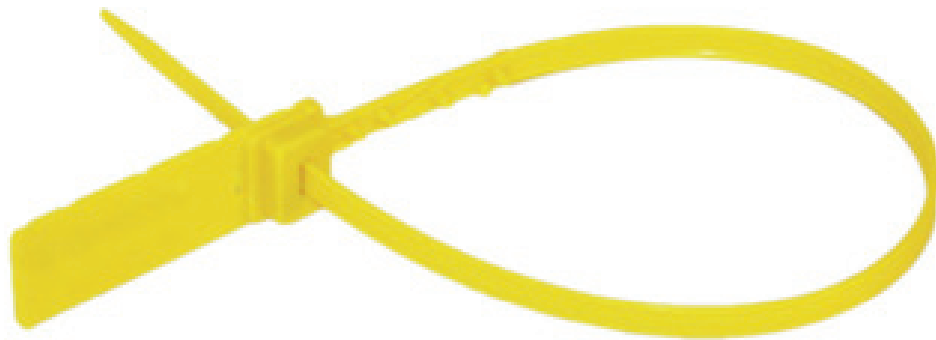
TURN OFF THE ENGINE

PULL THE PARKING BRAKE ON THE TRAILER

PUT CHOCKS UNDER THE WHEELS

***DO NOT DRIVE AWAY FROM THE DOCK
WITHOUT THE CONSENT AND SIGNAL OF
THE WAREHOUSE EMPLOYEE***

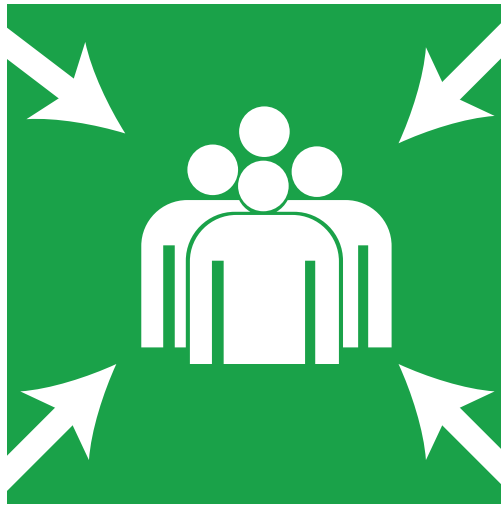
DRIVER'S OBLIGATIONS



***THE SEALS ARE PLACED AND REMOVED
ESA logistika Polska EMPLOYEE***



***THE DRIVER IS RESPONSIBLE
FOR SECURING THE VEHICLE AND GOODS,
AND ENSURING THAT THE VEHICLE
IS AIRTIGHT***



***IN CASE OF EVACUATION, GO TO
THE ASSEMBLY POINT AND FOLLOW
THE INSTRUCTIONS
OF ESA logistika Polska STAFF***



***THE CONSUMPTION OF ALCOHOL
IS STRICTLY PROHIBITED***

***SMOKING IS PERMITTED ONLY
IN DESIGNATED AREAS***



***A SPEED LIMIT OF 10 KM/H
APPLIES THROUGHOUT
THE ENTIRE LOGISTICS PARK***



***YOU MUST FOLLOW THE DRIVING
DIRECTIONS AND ADHERE
TO THE SIGNAGE***

DRIVER'S OBLIGATIONS



***ANY DAMAGE OR ACCIDENT MUST
BE REPORTED TO THE OFFICE
IMMEDIATELY***



***IT IS FORBIDDEN TO ENTER BETWEEN
THE TRAILER AND THE WAREHOUSE***

FACILITY PLAN

